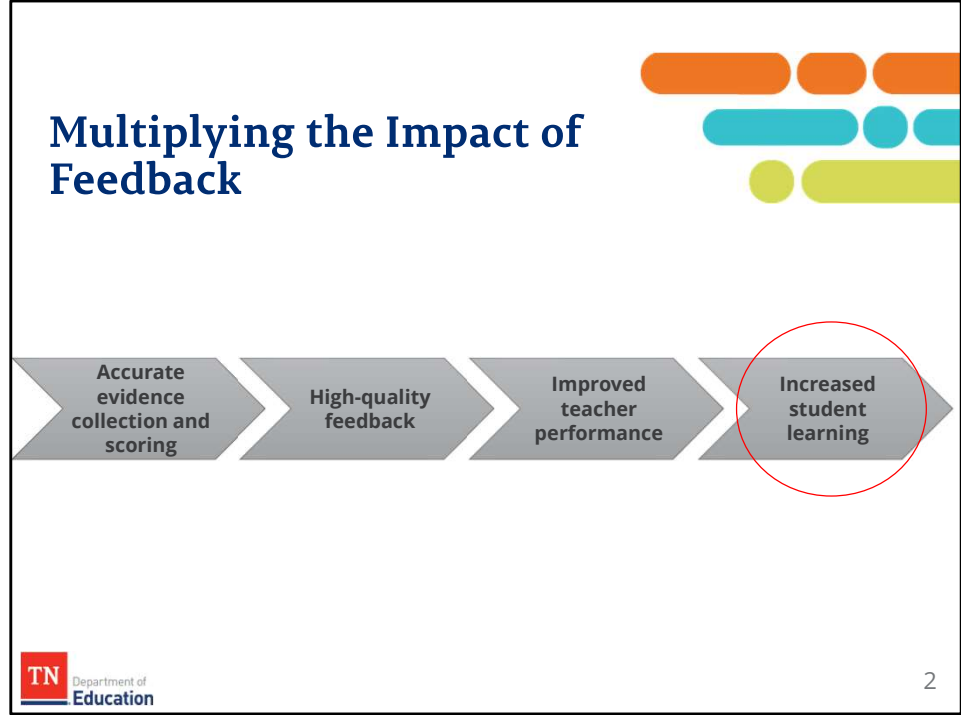


Wrap Up



Let's take a few moments to finish up.



Observers are tasked with collecting and scoring evidence of practice in order to provide feedback to improve teacher practice. This is best accomplished when the feedback is high quality and clearly connects planning and classroom environment with instruction. By linking indicators from all three rubrics and encouraging teachers to consider these connections as they plan for implementation of instruction, the impact of evaluator feedback is multiplied.

As you move forward with your evaluation practice, consider how to support teachers in creating positive academic environments, establishing high expectations, and implementing impactful lessons. Through feedback and coaching around the practices shared in all three of the TEAM rubrics, evaluators can improve teacher performance and increase student learning.

The Recertification Test

- State law **requires** all observers to be certified each year prior to conducting observations.
- You **must** pass the certification test before you begin any teacher observations.
- **Conducting observations without passing the certification test is a grievable offense and will invalidate observations.**



All observers must be certified. Conducting observations without being certified is a grievable offense. TNCompass is designed to ensure observation without certification cannot happen. You must certify before you can be given the credentials to observe.

The Recertification Test

Once you **pass** the certification test, you will:

- have access to your certificate in the Learning Management System,
- receive an **evaluation credential** in TNCompass, and
- be given **access to the evaluation process** in TNCompass.



Once you pass your certification test, print your certificate or save it electronically. You may need to send a copy of this certificate to your TEAM configurator or director of human resources. You must be staffed as an observer by your district in order to add evaluation data in TNCompass.

The Recertification Test

- **Part 1: Lesson Analysis**
 - View a lesson.
 - Assign a rating to each of the 12 indicators of the TEAM instruction domain.
- Success criteria:
 - No more than ± 1 point away from the benchmark rating for at least 8 indicators, **and**
 - Average observation score is within ± 0.9 points away from the benchmark average observation score
- **Part 2: General Knowledge**
 - Eight multiple choice items on a variety of topics related to TEAM
- Success criteria:
 - Correct response on at least 6 items

The recertification test consists of two parts. The first is a lesson analysis in which you must demonstrate inter-rater reliability. The second part is a general knowledge, multiple choice test. The success criteria are listed on this slide. Please take a moment to ensure you understand the testing requirements.

The Recertification Test

- Both parts of the recertification test must be successfully completed in order to be recertified.
- There are two opportunities to pass the recertification test.
 - If any support or a second attempt is needed, please contact TEAM.Questions@tn.gov.

You must successfully complete both parts of the recertification test in order to be recertified and conduct observations for this school year.

You will have two opportunities to pass the recertification test.

Please do not hesitate to contact TEAM.Questions@tn.gov as needed for support throughout the certification process. An experienced TEAM observer will be available to provide both technical and content assistance as needed.

TASL Credit

- This training is a TASL-approved event for 7 hours.
- You will receive an email with the TASL grid from the department within a week of the completion of certification.
- This email may be uploaded in TNCompass as a pdf for documentation of TASL hours.
- **Please note: only the TASL grid email will be approved for TASL hours. The certificate of completion that is generated at the end of certification will not be accepted for TASL hours.**



This training is approved for 7 TASL hours.

You will receive a TASL grid email from the department within a week of completion. You may upload this email in TNCompass under the TASL tab.

This email – not the completion certificate – contains the information needed to document TASL hours. Please do not discard or misplace it.

**You have completed
TEAM Teacher
Evaluator
Recertification
Training.**

**Please use the “Next”
button below to
proceed to the
certification test.**



Congratulations! You have now completed TEAM Teacher Evaluator Recertification Training. You may now proceed to the certification test.