

# 2024-25 Evaluation Configurator Monthly Office Hour February 20, 2025

**Amy Floyd**

*Director of Data and District Support | Educator  
Effectiveness*



# DISCLAIMER – Generative AI Tools

The State of Tennessee does not currently permit the use of Generative AI tools, such as Otter, in meetings hosted on state resources. Meetings with contractors, vendors, and subrecipients are not public meetings and may involve discussion of protected state data. Generative AI tools are not adequately regulated and are designed to train on data that is collected and may misrepresent data or release protected data to the general public. While the State supports your desire to maintain documentation of the meeting and what you learn, please respect our decision to safeguard information and do not attempt to use tools such as these. If you choose to use a tool such as this, the State will block that tool from the meeting.





# Agenda

In this meeting, we will discuss

- Pacing
- Monitoring Observations
- Resources
- Next Steps
- Support



# Observation Pacing

Observation pacing is based on a combination of teacher license status and the individual growth **or** level of overall effectiveness (LOE) score.



# Observation Pacing

Licensure Status	Previous Year Individual Growth or Level of Overall Effectiveness <sup>2</sup>	Minimum Required Observations*	Minimum Required Observations per Domain*	Minimum Number of Minutes per School Year
Practitioner	Levels 1-4	All domains observed, with a minimum of three (3) domains observed in each semester and a minimum of three (3) formal observations.	3 Instruction 2 Planning 2 Environment	90 minutes
	Level 5	One (1) formal observation covering all domains first semester; two (2) walk-throughs second semester.	1 Instruction 1 Planning 1 Environment	60 minutes
Professional	Level 1	All domains observed, with a minimum of three (3) domains observed in each semester and a minimum of three (3) formal observations.	3 Instruction 2 Planning 2 Environment	90 minutes
	Levels 2-4	All domains observed with a minimum of two (2) domains observed in each semester and a minimum of two (2) formal observations.	2 Instruction 1 Planning 1 Environment	60 minutes
	Level 5	One (1) formal observation covering all domains first semester; two (2) walk-throughs second semester.	1 Instruction 1 Planning 1 Environment	60 minutes

# Observation Pacing

- All teachers shall have at least one-half ( $\frac{1}{2}$ ) of all observations be unannounced.
- A minimum of one (1) observation shall be announced for teachers.
- For teachers scoring level 5 on individual growth or level of overall effectiveness, the required observation shall be unannounced.
- All observations for teachers using the school services personnel rubric shall be announced observations to keep students' privacy in the forefront of evaluation practice.
- An LEA or charter school using the TEAM model may choose to allow observers to combine domains during classroom observations provided the requisite minimum time, semester, distribution, and notice (announced versus unannounced) are met.

# Observation Pacing

- The number of required observations for educators who received a partial year exemption (PYE) in the previous year, shall be determined by their performance level in the school year immediately preceding the PYE year.
- Any non-PYE educator without an LOE in the previous year shall have the maximum number of observations conducted based on the educator's license type.



# Monitoring Pacing in TNCompass



Home

Administration

Educators

Work Queue

Reports

Help

Amelia Floyd ▾

## Reports



### Report Selections

Report Type:

Charts

Reports

Report:

Pacing Guide ▾



Academic Year:

2024-2025 ▾

Location(s):

5 locations selected

Report Format:

Excel ▾

Generate



# Monitoring Pacing in TNCompass

A	G	K	L	M
Academic Year	▼ Educator Type	▼ PYE	▼ Evaluation Model	▼ Pacing License
2024-2025	Teacher	No	TEAM Model	Practitioner Teacher - 1st Issuance
2024-2025	Teacher	No	TEAM Model	Permit/Waiver
2024-2025	Teacher	No	TEAM Model	Professional - 10 Year

N	O	P	Q	R	S
Minimum Instruction Requirement	▼ Instruction Observed	▼ Minimum Planning Requirement	▼ Planning Observed	▼ Minimum Environment Requirement	▼ Environment Observed
	3	1	2	1	2
	3	1	2	1	2
	2	0	1	0	1

T	U	V
Minimum Professionalism Requirement	▼ Professionalism Observed	▼ Pacing Met
	1	0 N
	1	0 N
	1	0 N

# Additional TNCompass Observation Reports

- **Staff Observers Report:** Provides names and roles of all educators in the district who have passed one or both certification tests for evaluation.
  - Only certified staff can observe teachers and/or leaders.
  - Permissions to observe can be granted in the administration tab.
- **Observation Summary Report:** Provides completion status of observations and walkthroughs by schools. Includes total observations, total announced observation, total scored observation, total walk-throughs and total by domain.
- **Observation Summary Report District:** Provide completion status of observations and walkthroughs by the district.

# CLASS Observations

# CLASS Observations

For the 2025-26 school year, all VPK and special education preschool teachers are required to be observed using both the Classroom Assessment Scoring System (CLASS) and CLASS Environment tool as a coaching and feedback tool.

Observations must be conducted by a reliably trained district staff person.



# CLASS Observations

TEAM Districts may use the TEAM Rubric **or** the CLASS rubric for evaluations.

Only one observation rubric (TEAM or CLASS) can be used for Pre-K teachers.

- TEAM districts who elect to use CLASS will enter CLASS observations into TNCompass.
- TEAM districts who elect to use the TEAM observation rubric for Pre-K teachers will enter the TEAM observation in TNCompass.



# CLASS Observations

- Districts who use an Approved Alternative Evaluation Model (not TEAM) cannot utilize CLASS as an observation for evaluation.
- TEAM Districts who elect to use CLASS as their observation tool for evaluations will indicate this on the annual Evaluation Flexibility Options survey.



# CLASS Certifications

Certification are valid for a school year. Certifications expire on June 30 of each year. Observers must pass a reliability each year.

The Early Learning division is offering several upcoming CLASS Reliability trainings for district representatives who will be conducting CLASS observations in the 2025-26 school year.



# CLASS Certifications

- Click [here](#) to register for a reliability training. More information and additional training opportunities can be found at [Teachstone.com](https://www.teachstone.com).
- Once certified, if TEAM Districts/Charters would like to select CLASS as the observation tool for Pre-K teachers, please email a copy of your reliability certificate to Liz.Newsone@tn.gov and complete [this survey](#) indicating you would like to have CLASS added to your TNCompass dashboard.
- Additional information on implementing CLASS as a Pre-K observation tool can be found [here](#).



# Next Steps

- Monitor pacing to ensure all educators meet the required pacing.
- Share pacing reports with observers.
- Update Contacts in TNCompass
- Talk with your district Pre-K team to determine what your district plans to do for 2025-26 before the Flexibility Survey opens this spring.

# Resources

[TNCompass Charts and Reports Overview](#)

[Partial Year Exemptions](#)

[Administrators Observations User Guide](#)



# Email Support

- [TEAM.Questions@tn.gov](mailto:TEAM.Questions@tn.gov)
  - TNCompass
  - Observations
  - Growth Measures
    - TVAAS
    - Alternative Growth Measure –Universal Reading Screener
  - Achievement Measures
  - Evaluation Training
- [Portfolio.Questions@tn.gov](mailto:Portfolio.Questions@tn.gov)
  - Portfolio
- [RV.Questions@tn.gov](mailto:RV.Questions@tn.gov)
  - TVAAS Roster Verification



# Email Support

- [Educator.Licensure@tn.gov](mailto:Educator.Licensure@tn.gov)
  - Licensure questions
  - Professional Development Points (PDPs)
  - Experience
  
- [TASL.Information@tn.gov](mailto:TASL.Information@tn.gov)
  - Tennessee Academy for School Leaders (TASL)
    - Academies
    - Credits
  
- [TN.Universalscreener@tn.gov](mailto:TN.Universalscreener@tn.gov)
  - Test Administration
  - Reporting
  
- [TNED.Assessment@tn.gov](mailto:TNED.Assessment@tn.gov)
  - Assessment





# Thank You!

Contact Info or Questions?

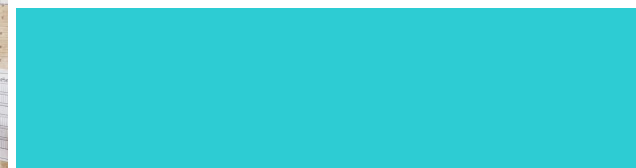
*Permission is granted to use and copy these materials for non-commercial educational purposes with attribution credit to the "Tennessee Department of Education". If you wish to use the materials for reasons other than non-commercial educational purposes, please contact the office of general counsel at (615) 741-2921 or [TDOE.GeneralCounsel@tn.gov](mailto:TDOE.GeneralCounsel@tn.gov).*

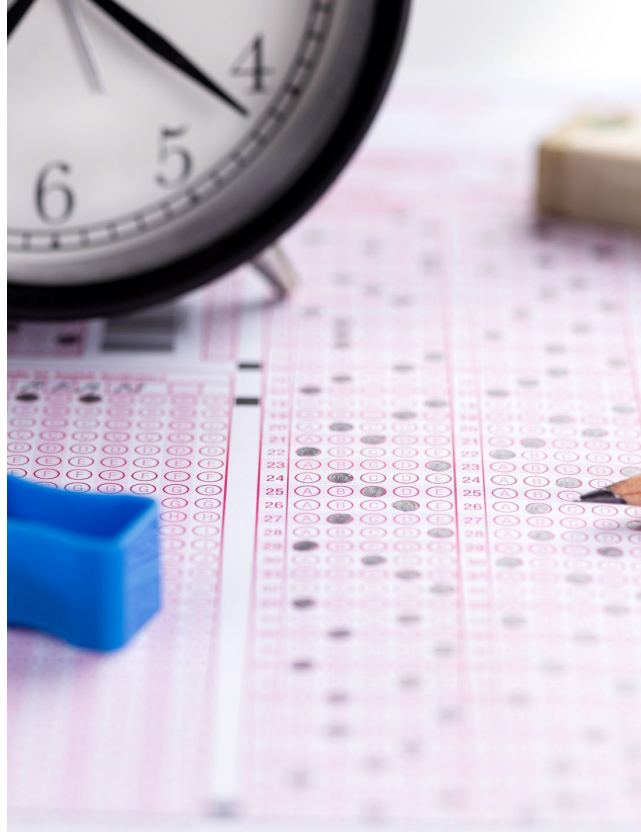
















MacBook Air



“



**1**



**2**

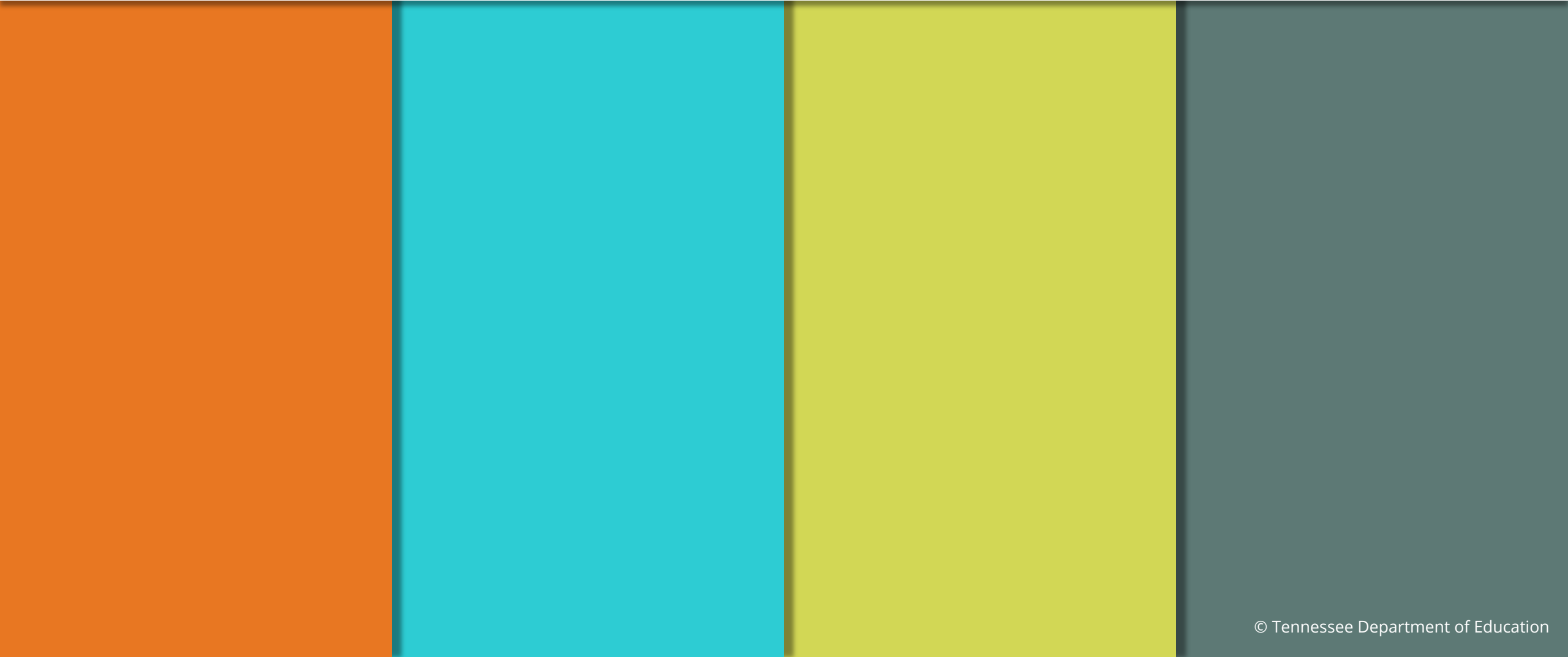


**3**



**4**







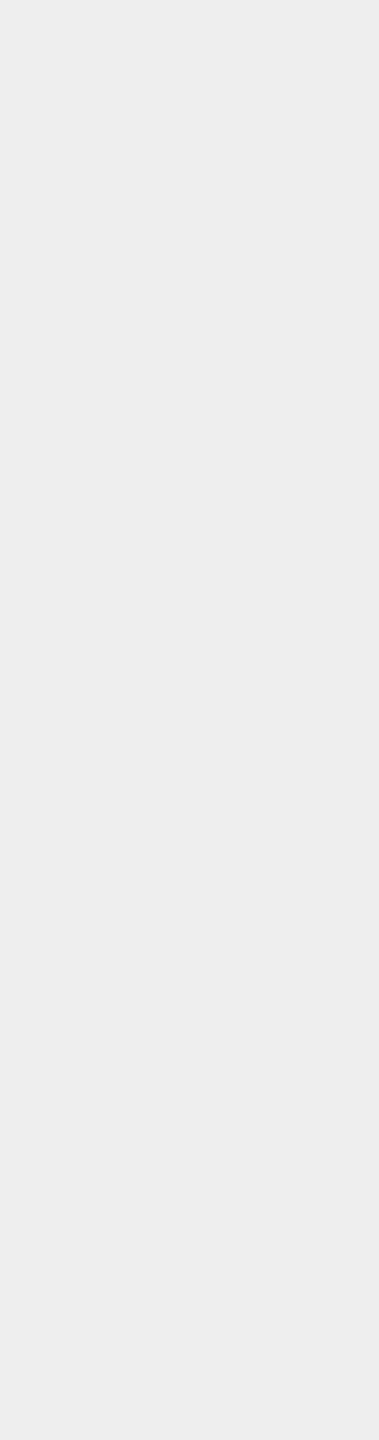














# Thank You!

Contact Info or Questions?

*Permission is granted to use and copy these materials for non-commercial educational purposes with attribution credit to the "Tennessee Department of Education". If you wish to use these materials for reasons other than non-commercial educational purposes, please contact the Office of General Counsel at (615) 741-2921 or Joanna Collins ([Joanna.Collins@tn.gov](mailto:Joanna.Collins@tn.gov)).*



# Thank You!

Contact Info or Questions?

*Permission is granted to use and copy these materials for non-commercial educational purposes with attribution credit to the "Tennessee Department of Education". If you wish to use these materials for reasons other than non-commercial educational purposes, please contact the Office of General Counsel at (615) 741-2921 or Joanna Collins ([Joanna.Collins@tn.gov](mailto:Joanna.Collins@tn.gov)).*



# Table Example

Header Row				
Row 1				



# Chart Examples

